

CONSTRUCTION SEQUENCE

1. CONSTRUCT STABILISED SITE ACCESS
2. CONSTRUCT SEDIMENT FENCE
3. CONSTRUCT SEDIMENT BASINS
4. INSTALL SWALES AND OTHER REQUIRED MEASURES TO DIRECT FLOW TO BASINS
5. STRIP TOPSOIL AS REQUIRED
6. UNDERTAKE BULK EARTHWORKS
7. INSTALL SEDIMENT CONTROLS AS REQUIRED AROUND STORMWATER INFRASTRUCTURE AS INSTALLED
8. PROGRESSIVELY REHABILITATE SITE
9. REMOVE SEDIMENT CONTROLS ONCE SITE IS STABILISED

NOTES

1. ALL WORKS TO BE CARRIED OUT IN ACCORDANCE WITH RELEVANT ORDINANCES AND REGULATIONS; NOTE IN PARTICULAR THE REQUIREMENTS OF THE CURRENT NSW 'BLUE BOOK' 'GUIDELINES FOR CONSTRUCTION AND LAND DEVELOPMENT', SOILS AND CONSTRUCTION (THE 'BLUE BOOK').
2. INSTALL SEDIMENT PROTECTION FILTERS ON ALL NEW AND EXISTING STORMWATER INLET PITS IN ACCORDANCE WITH EITHER THE MESH AND GRAVEL INLET FILTER DETAIL SD6-11 OR THE GEOTEXTILE INLET FILTER DETAIL SD6-12 OF THE 'BLUE BOOK'.
3. ESTABLISH ALL REQUIRED SEDIMENT FENCES IN ACCORDANCE WITH DETAIL SD6-8 OF THE 'BLUE BOOK'.
4. INSTALL SEDIMENT FENCING AROUND INDIVIDUAL BUILDING ZONE/AREAS AS REQUIRED AND AS DIRECTED BY THE SUPERINTENDENT.
5. ALL TRENCHES INCLUDING ALL SERVICE TRENCHES AND SWALE EXCAVATION SHALL BE SIDE-CAST TO THE HIGH SIDE AND CLOSED AT THE END OF EACH DAY WORK.
6. THE CONTRACTOR SHALL ENSURE THAT ALL VEGETATION (TREE, SHRUB AND GROUND COVER) WHICH IS TO BE RETAINED SHALL BE PROTECTED DURING THE DURATION OF CONSTRUCTION. REFER ARCHITECTS PLANS FOR TREES TO BE KEPT.
7. ALL VEGETATION TO BE REMOVED SHALL BE MULCHED ONSITE AND SPREAD/STOCKPILED AS DIRECTED BY THE SUPERINTENDENT.
8. STRIP TOPSOIL IN AREAS DESIGNATED FOR STRIPPING AND STOCKPILE FOR RE-USE AS REQUIRED. ANY SURPLUS MATERIAL SHALL BE REMOVED FROM SITE AND DISPOSED OF IN ACCORDANCE WITH RELEVANT AUTHORITY GUIDELINES.
9. CONSTRUCT AND MAINTAIN ALL MATERIAL STOCKPILES IN ACCORDANCE WITH DETAIL SD4-1 OF THE 'BLUE BOOK' (INCLUDING CUT-OFF SWALES TO THE HIGH SIDE AND SEDIMENT FENCES TO THE LOW SIDE).
10. ENSURE STOCKPILES DO NOT EXCEED 2.0m HIGH. PROVIDE WIND AND RAIN EROSION PROTECTION AS REQUIRED IN ACCORDANCE WITH THE 'BLUE BOOK'.
11. PROVIDE WATER TRUCKS OR SPRINKLER DEVICES DURING CONSTRUCTION AS REQUIRED TO SUPPRESS DUST.
12. ONCE CUT/FILL OPERATIONS HAVE BEEN FINALISED ALL DISTURBED AREAS THAT ARE NOT BEING WORKED ON SHALL BE RE-VEGETATED AS SOON AS PRACTICAL.
13. SITE WON TOPSOIL SHALL BE PLACED ON ALL PERMANENT BATTER SLOPES AND GRASS SEEDED OR PLANTED AND MULCHED TO LANDSCAPE ARCHITECTS REQUIREMENTS.
14. THE CONTRACTOR SHALL BE RESPONSIBLE FOR KEEPING A DETAILED WRITTEN RECORD OF ALL EROSION AND SEDIMENT CONTROLS ON-SITE DURING THE CONSTRUCTION PERIOD. THIS RECORD SHALL BE UPDATED ON A DAILY BASIS AND SHALL CONTAIN DETAILS ON THE CONDITION OF CONTROLS AND ANY/ALL MAINTENANCE, CLEANING AND BREACHES. THIS RECORD SHALL BE KEPT ON-SITE AT ALL TIMES AND SHALL BE MADE AVAILABLE FOR INSPECTION BY THE PRINCIPAL CERTIFYING AUTHORITY AND THE SUPERINTENDENT DURING NORMAL WORKING HOURS.
15. AT THE END OF EACH DAYS WORK, THE CONTRACTOR SHALL TAKE THE APPROPRIATE MEASURES TO STABILISE THE EXPOSED EARTHWORKS, SUCH AS:
 - CLOSING ALL TRENCHES
 - INSTALLING TEMPORARY DIVERSION MULCH BUNDS TO THE HIGH SIDE OF EXPOSED WORKS
 - INSTALLING TEMPORARY SILT FENCES AND/OR STAKED BALES TO DOWN HILL SIDE OF EXPOSED WORKS.

POLLUTION, EROSION & SEDIMENT CONTROL

INSPECTIONS AND MAINTENANCE SCHEDULE

RECORD MAINTENANCE ACTIVITIES AND DETAILS TO PROVIDE TO THE EPA.

1. DAILY:
 - CHUTES, BARRELS, WHEELBARROWS AND OTHER EQUIPMENT TO BE RINSED IN THE SITE WASH-DOWN AREA.
 - REMOVE ANY SEDIMENT FROM PUBLIC ROADS ADJACENT TO THE WORK AREA. DO NOT WASH INTO THE STORMWATER SYSTEM.
 - SUPPRESS DUST BY REGULAR SPRAYING OF WATER AND COVERING AND SECURING VEHICLE LOADS ENTERING/EXITING SITE.
 - MAINTAIN AND INSPECT POLLUTION CONTROL MEASURES DURING CONSTRUCTION AND UNTIL FULL STABILISATION. REPAIR AND REINSTATE WORKS AS NEEDED.
3. MONTHLY:
 - MAINTAIN AND INSPECT STABILISED SITE ACCESS POINTS.
 - MAINTAIN AND INSPECT HAY BALES, REPLACE AS REQUIRED IF DEGRADED OR DAMAGED.

AIR QUALITY

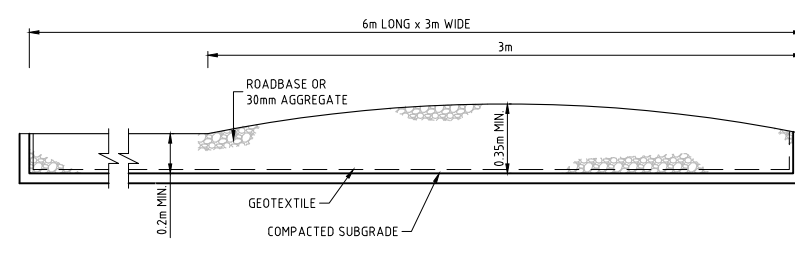
1. SUPPRESS DUST BY THE INCLUDING FOLLOWING METHODS WHERE APPLICABLE:
 - STAGE WORKS TO LIMIT THE EXTENT OF EXPOSED AND UNPROTECTED AREAS
 - REGULAR SPRAYING OF WATER
 - COVER AND SECURE VEHICLE LOADS ENTERING/EXITING SITE
 - USE AN ENVIRONMENTALLY FRIENDLY CHEMICAL SPRAY TO BIND SOIL TOGETHER THUS STABILISING UNUSED SOIL
 - RESTRICT SPEED OF VEHICLES ONSITE
 - COVER STOCKPILES TO PROTECT FROM THE WIND
2. IMPLEMENT MEASURES TO LIMIT AIR POLLUTION BY VEHICLES AND PLANT WORKING ON OR PASSING THROUGH THE SITE.
3. MAINTAIN POLLUTION CONTROL MEASURES DURING CONSTRUCTION AND UNTIL FULL STABILISATION. ROUTINELY INSPECT EACH WEEK AND AFTER SIGNIFICANT RAINFALL EVENTS. REPAIR AND REINSTATE WORKS AS NEEDED TO MAINTAIN PROTECTION. RECORD MAINTENANCE ACTIVITIES AND DETAILS AND PROVIDE TO EPA FOR INSPECTION WHEN REQUESTED.

FIRE

1. BURNING OF WASTE MATERIALS MUST NOT BE UNDERTAKEN.
2. FIRE MAY BE PERMITTED FOR GENERAL HEATING PURPOSES IF IN A BRAZIER OR CONSTRUCTED FIREPLACE, USING SEASONED, UNTREATED TIMBER.

SEDIMENT BASIN NOTES

1. PRIOR TO ANY FORECAST WEATHER EVENT, LIKELY TO RESULT IN SEDIMENT LADEN RUNOFF ON THE SITE, ANY EXISTING DETENTION BASINS/TRAPS SHALL BE DEWATERED TO PROVIDE SUFFICIENT CAPACITY TO CAPTURE SEDIMENT LADEN FROM THE SITE.
2. ANY SEDIMENT LADEN WATER CAPTURED ON-SITE MUST BE TREATED TO ENSURE IT WILL ACHIEVE ACT EPA WATER QUALITY OBJECTIVE PRIOR TO ITS RELEASE FROM SITE. A SAMPLE OF THE RELEASED TREATED WATER MUST BE KEPT ON-SITE IN A CLEAR CONTAINER WITH THE SAMPLE DATE RECORDED.
3. IF DOSING WITH ALUM OR CHEMICALS OTHER THAN GYPSUM, APPLY IN ACCORDANCE WITH IECA 2018 APPENDIX B OR THE NSW BLUE BOOK.
4. THE CHEMICAL/AGENT (FLOCCULATING/COAGULANTS) USED IN TYPE D AND TYPE F BASINS TO TREAT TURBID WATER CAPTURED IN THE BASIN MUST BE APPLIED IN CONCENTRATIONS SUFFICIENT TO ACHIEVE ACT EPA WATER QUALITY OBJECTIVES (TURBIDITY < 50 NTU, 6.5 < pH < 8.5) WITHIN THE 5 DAY RAINFALL DEPTH USED TO CALCULATE THE CAPACITY OF THE BASIN, AFTER A RAINFALL EVENT.
5. ALL MANUFACTURERS INSTRUCTIONS MUST BE FOLLOWED FOR THE USE OF ANY CHEMICALS/AGENTS USED ON-SITE, EXCEPT WHERE APPROVED BY THE RESPONSIBLE PERSON OR AN APPROPRIATE EPA OFFICER.
6. SUFFICIENT QUANTITIES OF CHEMICALS/AGENTS TO TREAT TURBID WATER (FLOCCULATING/COAGULANTS) MUST BE PLACED SUCH THAT WATER ENTERING THE BASIN/SEDIMENT TRAP MIXES WITH THE CHEMICALS/AGENTS AND IS CARRIED INTO THE BASIN/TRAP.
7. AN OUTLET IS TO BE DESIGNED, CONSTRUCTED AND MAINTAINED IN SUCH A MANNER THAT UNDER OPERATING CONDITIONS SEDIMENT DOES NOT LEAVE THE BASIN AND EROSION DOES NOT OCCUR. REFER TO "2022 ACT EPA GUIDELINES FOR CONSTRUCTION AND LAND DEVELOPMENT".
8. SPILLWAY TO BE STABLE IN THE PEAK FLOW FROM AT LEAST THE 10-YEAR ARI TIME OF CONCENTRATION EVENT.
9. ANY BASIN MUST BE DEWATERED AS SOON AS PRACTICAL, ONCE WATER CAPTURED IN THE BASIN ACHIEVES ACT EPA WATER QUALITY OBJECTIVES. FLOCCULATION AND DISCHARGE/DEWATERING IS TO OCCUR WITHIN FIVE DAYS OF A RAIN EVENT OR WHEN WATER LEVEL IS ABOVE 20% OF THE BASIN'S FULL CAPACITY (INDICATED BY THE 20% WATER LEVEL INDICATOR WHICH WAS INSTALLED WHEN THE BASIN WAS CONSTRUCTED). DOSING AND DISCHARGE IS TO BE CARRIED OUT AS PER "2022 ACT EPA GUIDELINES FOR CONSTRUCTION AND LAND DEVELOPMENT".
10. INSPECT THE SEDIMENT BASINS AFTER EACH RAINFALL EVENT AND/OR WEEKLY. ENSURE THAT ALL SEDIMENT IS REMOVED ONCE THE SEDIMENT STORAGE ZONE IS FULL. ENSURE THAT OUTLET AND EMERGENCY SPILLWAY WORKS ARE MAINTAINED IN A FULLY OPERATIONAL CONDITION AT ALL TIMES.



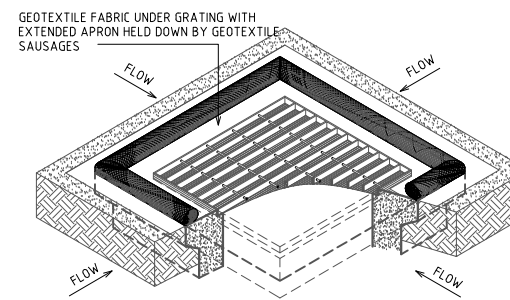
GEOTEXTILE FABRIC DESIGNED TO PREVENT INTERMIXING OF SUBGRADE & BASE MATERIALS & TO MAINTAIN GOOD PROPERTIES OF THE SUB-BASE LAYERS. GEOTEXTILE MAY BE WOVEN OR NEEDLE PUNCHED PRODUCT WITH A MINIMUM CBR BURST STRENGTH (AS3706.4-90) OF 2500N.

NOTES

- STRIP TOPSOIL & LEVEL SITE.
- COMPACT SUB-GRADE.
- COVER AREA WITH NEEDLE PUNCHED GEOTEXTILE.
- CONSTRUCT GRAVEL PAD OVER GEOTEXTILE USING ROADBASE OR 30mm AGGREGATE. MINIMUM 3m WIDE
- CONSTRUCT HUMP IMMEDIATELY WITHIN BOUNDARY TO DIVERT WATER TO A SEDIMENT FENCE OR TRAP

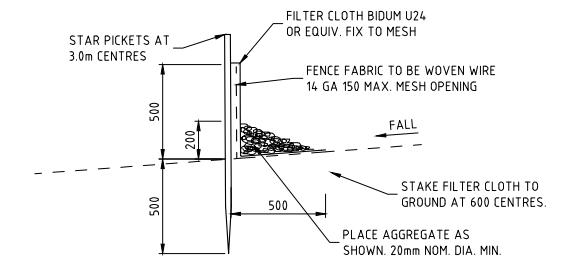
STABILISED SITE ACCESS DETAIL

NTS



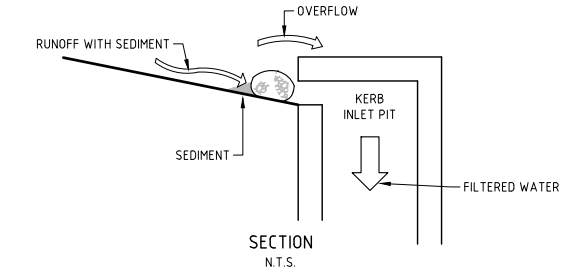
STORMWATER INLET SEDIMENT CONTROL

NTS



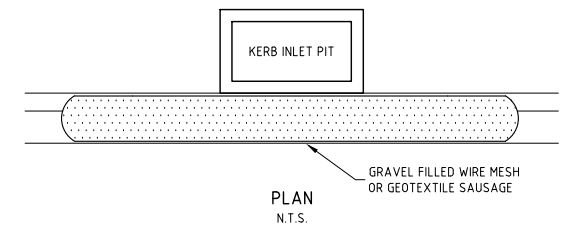
SEDIMENT CONTROL FENCE

NTS



SECTION

N.T.S.



PLAN

N.T.S.

NOTES

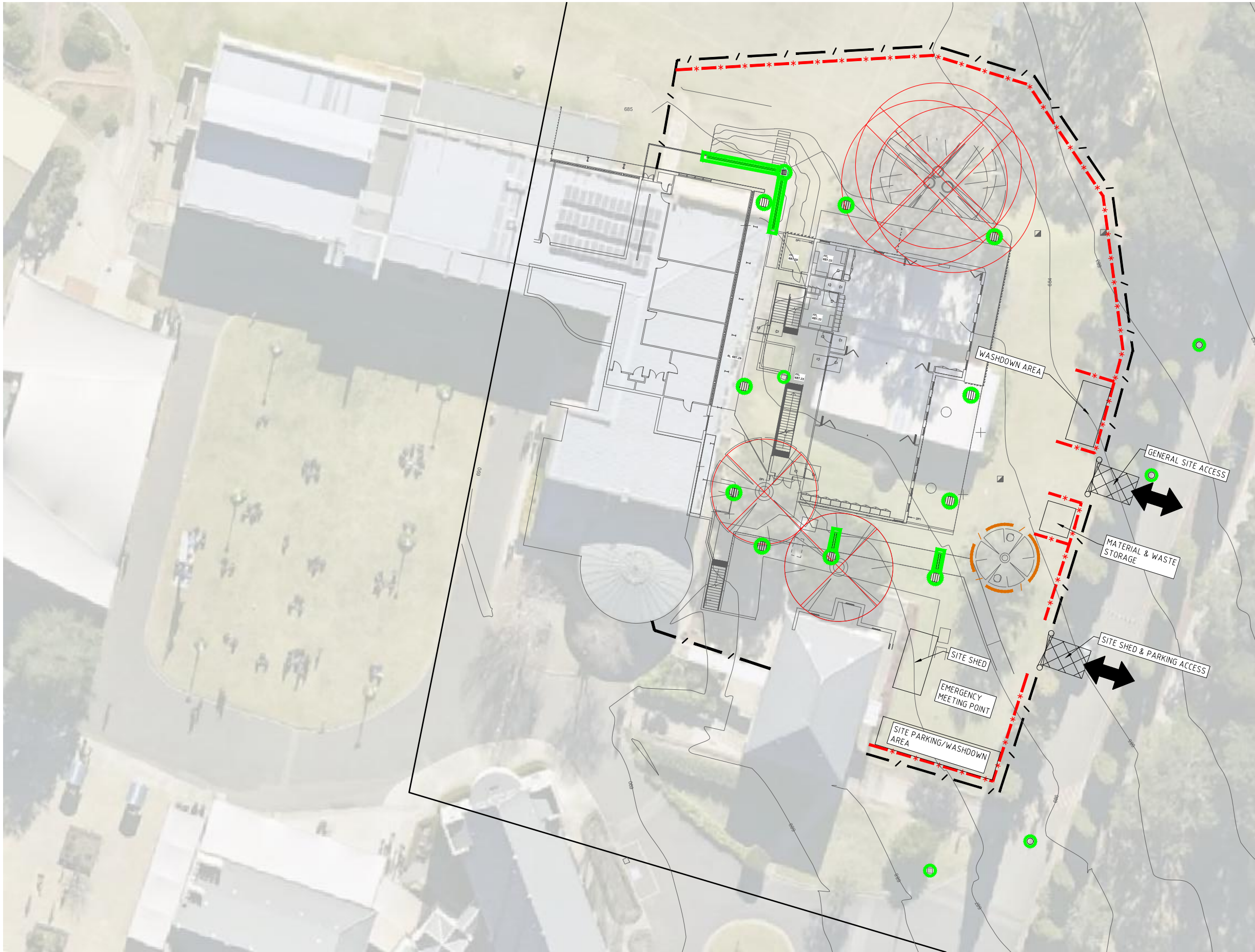
- FABRICATE A SLEEVE MADE FROM GEOTEXTILE OR WIRE MESH LONGER THAN THE LENGTH OF THE INLET PIPE.
- FILL THE SLEEVE WITH 25mm TO 50mm GRAVEL.
- FORM AN ELLIPTICAL CROSS SECTION ABOUT 150mm HIGH x 400mm WIDE.
- PLACE THE FILTER AT THE OPENING OF THE KERB INLET LEAVING A 100mm GAP AT THE TOP TO ACT AS AN EMERGENCY SPILLWAY.
- MAINTAIN THE OPENING WITH SPACER BLOCKS.
- FORM A SEAL WITH THE KERBING AND PREVENT SEDIMENT BYPASSING THE FILTER.
- FIT TO ALL KERB INLETS AT SAG POINTS.

FILTER SOCK DETAIL

NTS

NOT FOR CONSTRUCTION

Drawing to be printed in colour
 Drawing © Northrop Consulting Engineers Pty Ltd.
 Sheet size: A1
 Date plotted: 2/2/2026
 AM



LEGEND	
	SITE BOUNDARY
	EXISTING CONTOUR
	1.8m HIGH STEEL MESH TEMPORARY SITE FENCE
	TEMPORARY SEDIMENT CONTROL FENCE
	TREE PROTECTION FENCING
	PROPOSED LOCATION INLET SEDIMENT CONTROL
	PROPOSED LOCATION OF FILTER SOCKS
	STORMWATER GRATED PIT
	ACO STRIP DRAIN, CLASS 'D' LOCKDOWN HEELGUARD COVER / JUNCTION PIT
	STABILISED ACCESS
	SITE ACCESS
	EXISTING TREES TO BE REMOVED

CIVIL WORKS LOCATION:	TRINITY CATHOLIC COLLEGE CLINTON STREET & COLLEGE STREET GOULBURN N.S.W
TOTAL WORKS AREA:	APPROX. 2,800m ²
HOURS OF OPERATION:	MONDAY-SATURDAY, BETWEEN 7A.M-6P.M
CONTACT DETAILS	
COMPANY:	TBC
SITE MANAGER:	TBC
PROJECT MANAGER:	TBC

NOT FOR CONSTRUCTION